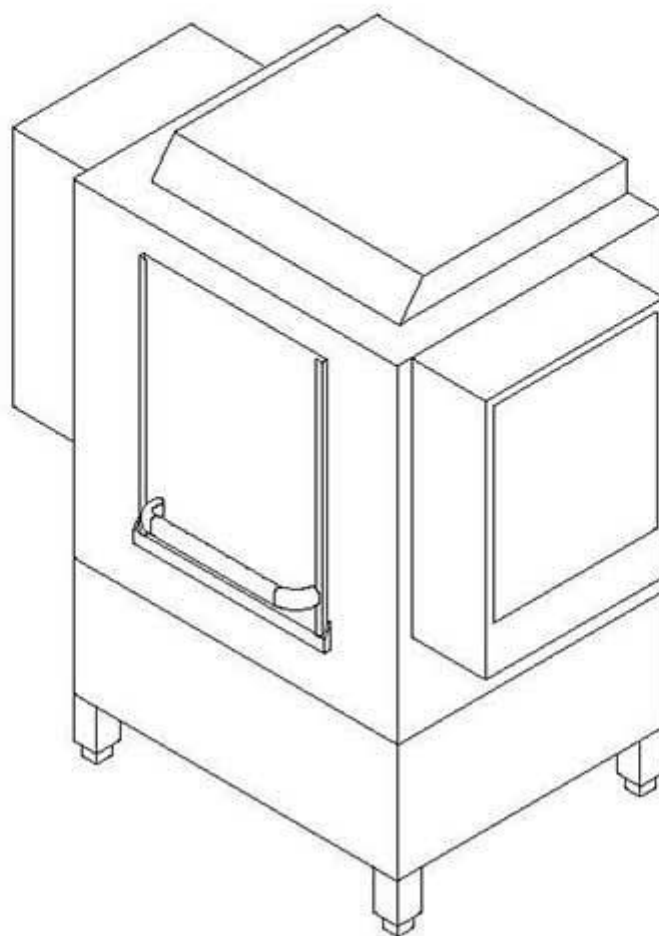


winterhalter

Spare parts list WKT 1000



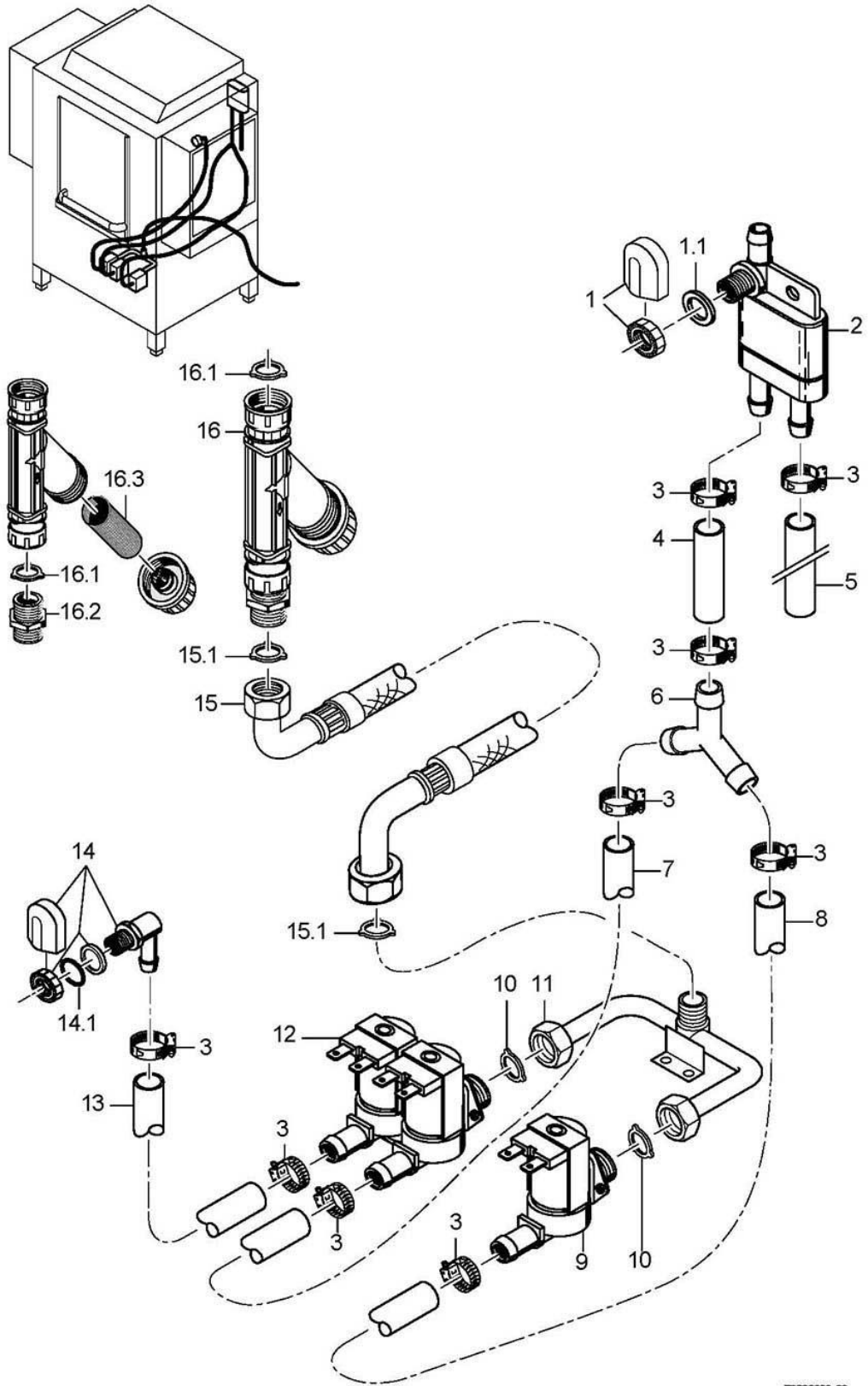
Drawn up: 08/93

Processed: 15.12.08

Parts no.: 89000911

Contents

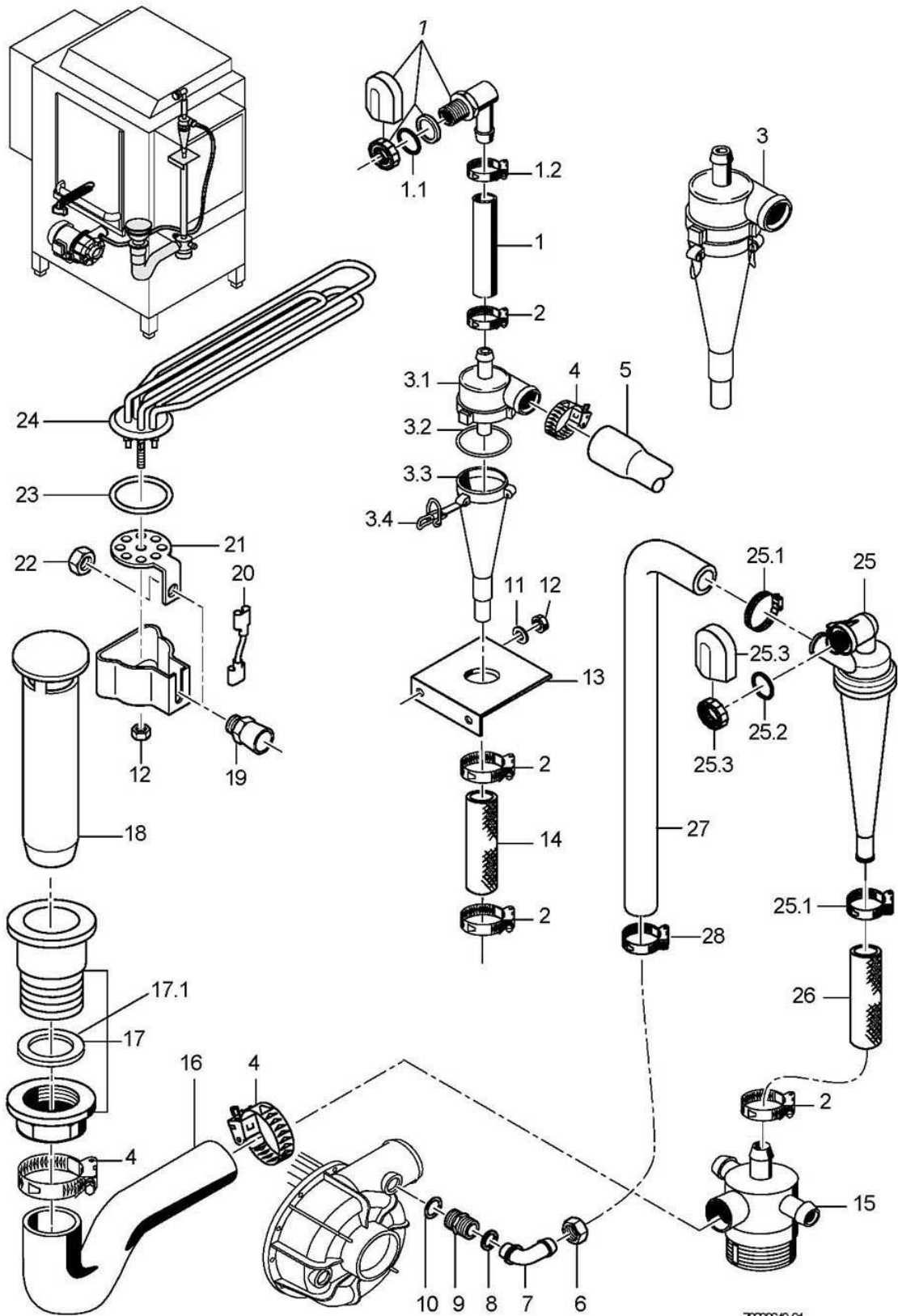
Water inlet	Page 1 - 2
Water drainage, tank heating, Mediamat	Page 3 - 4
Wash pump	Page 5 - 6
Wash system	Page 7 - 8
Pressure boiler	Page 9 - 10
Pressure-independent boiler	Page 11 - 12
Rinse pump	Page 13 - 14
Rinse system	Page 15 - 16
Dosage	Page 17 - 18
Drive I	Page 19 - 20
Drive II	Page 21 - 22
Panelling	Page 23 - 24
Door, filters	Page 25 - 26
Curtains	Page 27 - 28
Electrical parts I	Page 29 - 30
Electrical parts II	Page 31 - 32
Electrical parts III	Page 33 - 34



WKT 1000

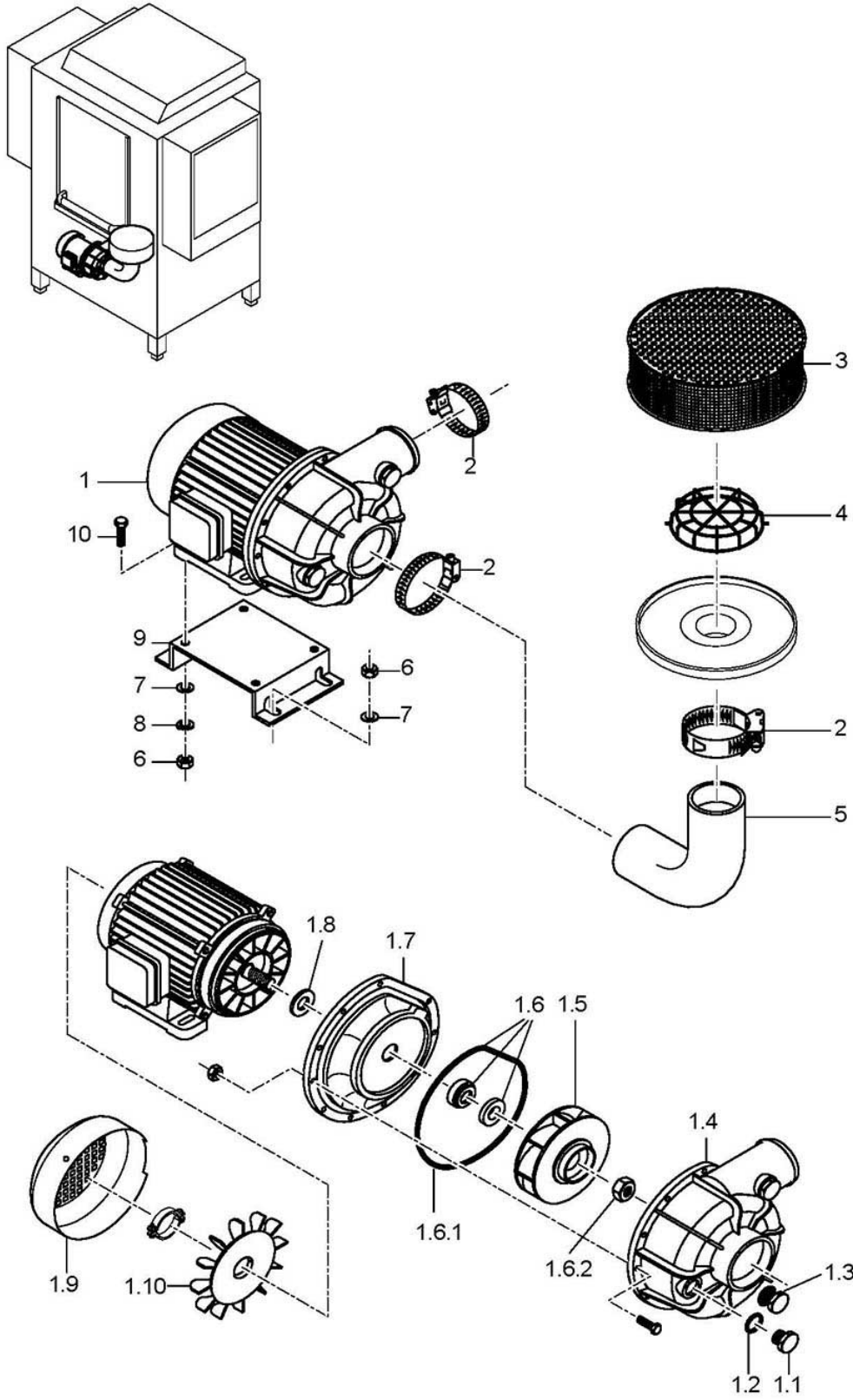
Water inlet

Item.	Designation	Parts no.:	Pc.	Notes
1	Tank inlet set	61004545		incl. item 1.1
1.1	Gasket; D17 X D24 X 2,0	62001366		
2	Lateral check valve	35 01 194		
3	Hose clamp; D12-22 X 9	28 02 105		
4	Industrial hose; DN13 X 3,5	40 02 035		350 mm; "By-the-metre" goods
5	Industrial hose; DN13 X 3,5	40 02 035		1400 mm; "By-the-metre" goods
6	Y-hose socket; D13	29 06 526		
7	Hose elbow; DN12,5 X 4,0	40 03 051		
8	Hose elbow; DN12,5 X 4,0	40 03 051		
9	Solenoid valve without flow control; 220-240V/50-60HZ	31 06 187		From machine no.: 367 514
9	Solenoid valve without flow control; 180-220V/50-60HZ	31 06 199		Japan
10	Gasket; D16 X D24 X 3,0	80002241		
11	Manifold cpl.	70200622		From machine no.: 367 514
12	Double solenoid valve; 220-240V/50-60HZ	31 06 182		
12	Double solenoid valve; 180-220V; 50-60HZ	31 06 200		Japan
13	Hose elbow; DN12,5 X 4,0	40 03 051		
14	Water inlet, 3-part set	55 31 007		incl. item 14.1
14.1	Gasket; D21 X D28 X 2,0	27 09 011		replaced by 55 31 007
14.1	Gasket; D20,5 X D28,5 X 2,0	27 01 002		replaced by 55 31 007
14.1.	O-ring; 20 X 3	27 07 031		
15	Water supply hose; DN13 X 3,5; 2500	40 02 060		incl. item 15.1
15.1	Gasket; D16 X D24 X 3,0	80002241		
o.P.	Extention for metal hose; DN15 X 1000 MM; G3/4"	29 01 307		Additional equipment
16	Dirt trap; 150 µM	80002153		incl. item 16.1 – 16.3
16.1	Gasket; D16 X D24 X 3,0	80002241		
16.2	Double nipple; G 3/4" X 40; SW30	80002167		
16.3	Strainer; D27 X 67 X 150µM	80002728		



WKT 1000**Water drainage, tank heating, Mediamat**

Item.	Designation	Parts no.:	Pc.	Notes
1	Mediamat inlet set cpl.	55 31 001		to machine no.: 478 299
1.1	Gasket; D21 X D28 X 2,0	27 09 011		replaced by 55 31 001
1.1	Gasket; D20,5 X D28,5 X 2,0	27 01 002		replaced by 55 31 001
1.1	O-ring; 20 X 3	27 07 031		
1.2	Hose clamp; D20-30 X 12	28 02 109		
2	Hose clamp; D20-30 X 12	28 02 109		
3	Mediamat	55 27 040		incl. item 3.1 – 3.4
3.1	Mediamat top section; ZULAUF D30; XX LG	35 01 124		
3.2	O-ring; 51 X 3	27 07 043		
3.3	Accelerator; D75 X 169 X D4,3	35 01 035		
3.4	Wash arm end piece clip; D2,0	28 04 041		
4	Hose clamp; D32-52 X 12	28 02 110		to machine no.: 478 299
5	Reducing hose; DN16 X DN30; 1300	40 03 036		to machine no.: 478 299
6	Union nut; G 3/4" X D20,5; SW30	29 07 203		
7	Mediamat connection elbow; D17; 90GRAD	29 06 524		
8	Gasket; D19,5 X D24 X 1,5	27 09 010		
9	Mediamat connection nipple; G 1/2" X G 3/4" X 32	30 11 502		
10	O-ring; 20 X 3,5	27 07 040		
11	Washer; D5,3 X D10 X 1,0	22 01 300		
12	Hexagonal nut; M5 SELBSTSICHERND	21 05 302		
13	Support for mediamat; 1,5 X 50 X 75	61000658		to machine no.: 478 299
14	Industrial hose; DN19,4 X 3,5	40 01 016		800 mm; metre ware; up to mach. no. 478 299
15	Mediamat drain; G 1 1/2"; D40	35 01 080		
16	Reducing elbow; DN37 X DN40	40 03 022		
17	Stand pipe bottom part; G 1 1/4" X 43	61006592		
18	Standpipe; ÜBERLAUFHÖHE 185	61004192		
19	Cable gland; PG13,5; 6-12 MM; IP68	31 10 040		
20	Star bridge; 2,5QMM; 90 LG	31 23 088		
21	Heating element flange; 1,5 X 62 X 113,5; D20	31 03 067		
22	Hexagonal nut; PG13,5	31 10 041		
23	O-ring; 43 X 7,0	27 07 088		
24	Heating element 6,0kW; 230V/400V/3	31 03 025		
24	Heating element 6,0kW; 240V/420V/3	31 03 042		
24	Heating element 6,0kW; 200V/346V/3	31 03 045		
24	Heating element 6,0kW; 254V/440V/3	31 03 041		
25	Mediamat Cyclo	61005184		From machine no.: 478 300
25.1	Hose clamp; D12-22 X 9	28 02 105		
25.2	O-ring; 20 X 3,5	27 07 040		
25.3	Tank inlet set; G 1/2" X 8; SW27	61005339		
26	Industrial hose; DN16 X 4,0	40 01 015		900 mm; metre ware; from mach. no. 478 300
27	Moulded hose; DN16 X 4; 90GRAD	70005415		From machine no.: 478 300
28	Hose clamp; D20-30 X 12	28 02 306		From machine no.: 478 300

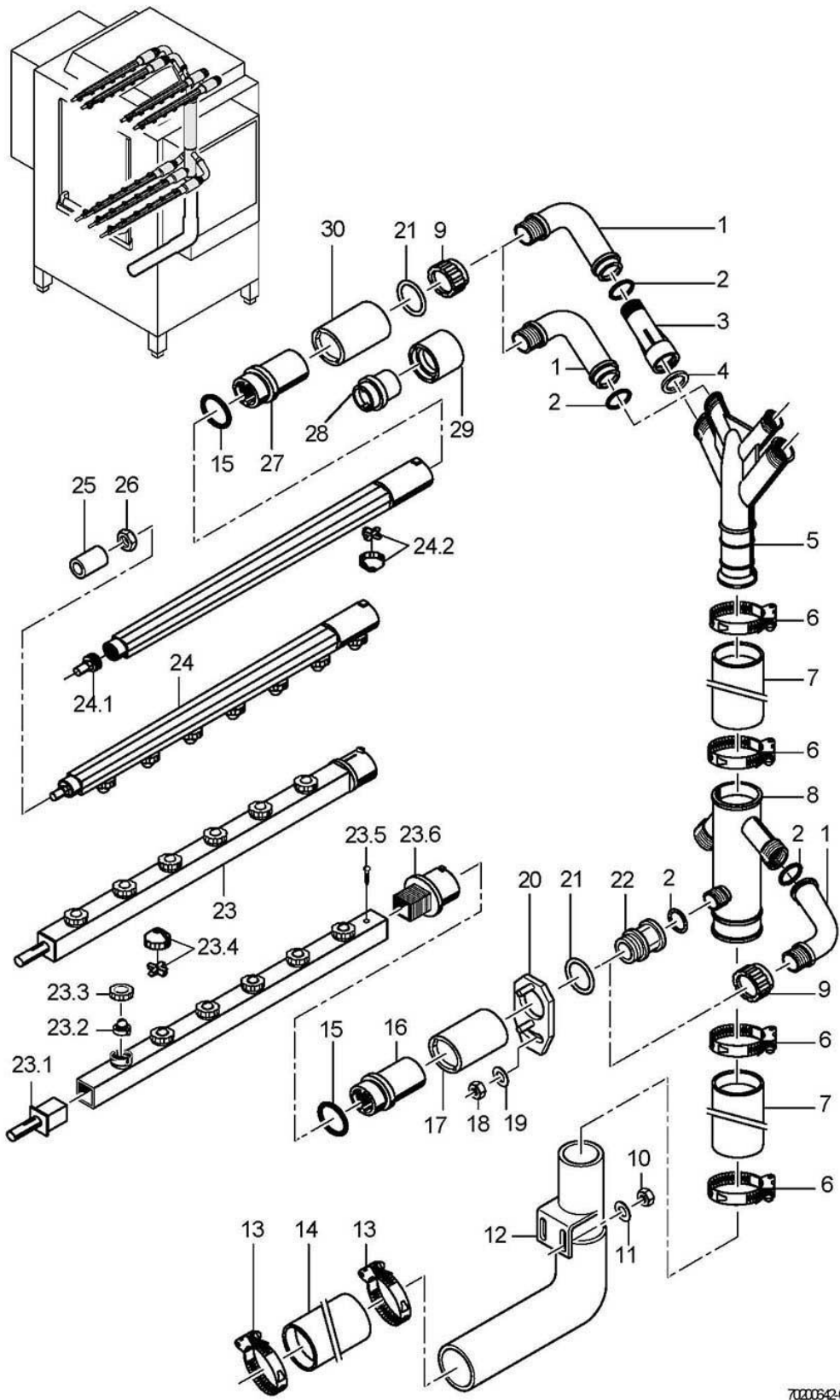


70200641-00

WKT 1000

Wash pump

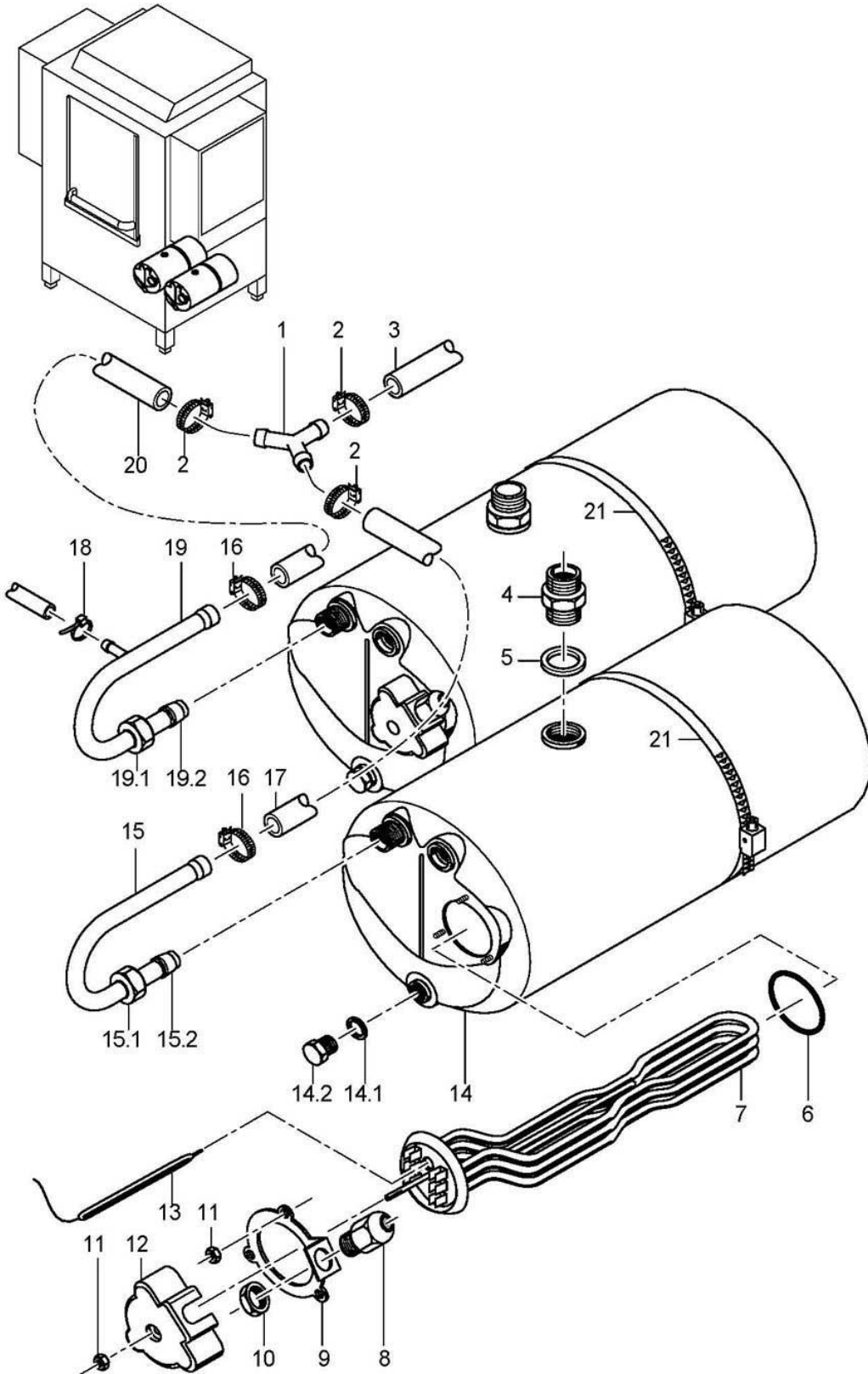
Item.	Designation	Parts no.:	Pc.	Notes
1	Pump 2.6kW 5/3; 230V/400V/3/50HZ	31 02 340		incl. item 1.1 - 1.9
1	Pump 2.6kW 5/3; 230/400V/3/60HZ	31 02 347		incl. item 1.1 - 1.9
1	Pump 2.6kW 5/3; 200/346V/3/50HZ	31 02 348		incl. item 1.1 - 1.9
1	Pump 2.6kW 5/3; 200/346V/3/60HZ	31 02 349		incl. item 1.1 - 1.9
1	Pump 2,6kW 5/3; 254V/440V/3/60HZ	31 02 345		incl. item 1.1 - 1.9
1.1	Dummy plug; G 1/2" X 20,5	35 01 108		
1.2	O-ring; 20 X 3,5	27 07 040		
1.3	Blind plug; SW19 X 15 X M12	31 02 397		
1.4	Pump housing	31 02 243		
1.5	Pump impeller; D136	31 02 306		for 50 Hz pumps
1.5	Pump impeller; D112; 2,6KW; 60HZ	31 02 310		for 60 Hz pumps
1.6	Sealing kit; 2,6 KW	80002671		
1.6.1	Gasket	31 02 307		
1.6.2	Nut; M14 LH	31 02 404		
1.7	Flange end shield; 2,6 KW PUMPE	31 02 396		
1.8	Seating ring	31 02 304		
1.9	Fan blade cover	31 02 309		
1.10	Fan blade	31 02 308		
2	Hose clamp; D62-82 X 12	28 02 137		
3	Pump sieve; D226 X 72	55 13 009		
4	Suction sieve; D85 X 68 X D2	61002500		
5	Hose elbow 90°; DN62X9,0;80X160	70200303		
6	Hexagonal nut; M6 SELBSTSICHERND	21 05 304		
7	Washer; D6,4 X D12,5 X 1,6	22 01 302		
8	Spring washer; B8	23 03 301		
9	Pump bracket; 1,5 X 180 X 276	61002191		
10	Hexagon screw; M8 X 30; A70	20 01 304		



70200542-00

WKT 1000**Wash system**

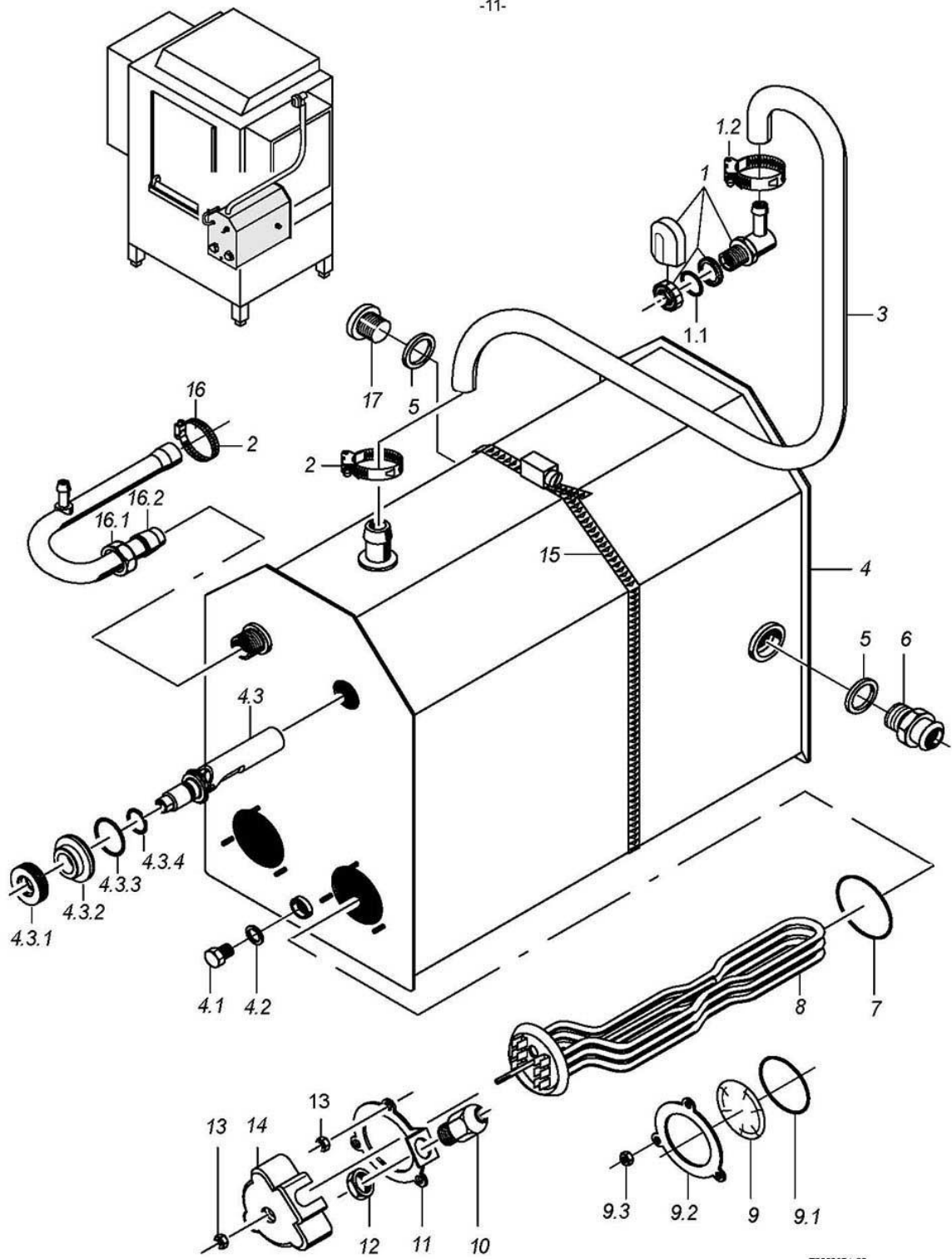
Item.	Designation	Parts no.:	Pc.	Notes
1	Angle for wash manifold; G 3/4"; 55,5 X 125	35 01 005	6	
2	O-ring; 24 X 3,0	27 07 087	6	
3	Extension; G 1 1/4" X 131	35 01 003	2	
4	Gasket; D30 X D39 X 2,0	27 02 001		
5	Wash manifold top section	35 01 017		
6	Hose clamp; D47-67 X 12	28 02 115		
7	Industrial hose; DN50 X 6,0	40 02 006		120 mm; "By-the-metre" goods
8	Wash manifold bottom section	35 01 018		
9	Cap nut; G 1 1/4" X 24	35 01 004		
10	Hexagonal nut; M6 SELBSTSICHERND	21 05 304		
11	Washer; D6,4 X D12,5 X 1,6	22 01 302		
12	Pipe elbow; D50/60 X 1,5; 275 X 36	70200325		
13	Hose clamp; D62-82 X 12	28 02 137		
14	Reinforced hose; DN60 X 6,0	40 02 007		140 mm; "By-the-metre" goods
15	O-ring; 28 X 2,5	27 07 049	7	
16	Locking nut; D38 X 53; G 3/4"	61004061	3	
17	Locking ring; D49 X 53	61002391	3	to machine no.: 367 513
17	Locking nut; D49 X 51,5	72001074	3	From machine no.: 367 514
18	Hexagonal nut; M5 SELBSTSICHERND	21 05 302		
19	Washer; D5,3 X D15 X 1,2	22 05 301		
20	Fixing ring; 1,5 X 50 X 70	65003529	3	From machine no.: 367 514
21	Gasket; D26 X D36 X 2,0	27 01 003	7	
22	Double nipple; G 3/4" X 40,5; SW32	35 01 019		
23	Wash arm wkt 1000	70200633		incl. item 23.1 - 23.5
23.1	Guide piece; 30 X 30 X 73,5	65002080		
23.2	Slotted jet; D20,5 X 14	65003461		From machine no.: 367 514
23.3	Coupling nut for wash jet; G 3/4" X D16	62001808		From machine no.: 367 514
23.4	Jet cpl.	60002465		to machine no.: 367 513
23.5	Sheet metal screw; ST 2,9 X 6,5	20 20 308		
23.6	Wash arm head; D44 X 69	65002079		
24	Wash arm bottom cpl.; 7 DÜSEN; 592 LG	61001965	3	From machine no.: 218 571
24	Set of wash arm; top	70200666		to machine no.: 218 570
24.1	Wash arm plug; G 1/2" X 37	35 01 210		
24.2	Jet cpl.	60002465		
25	Guide for washarm; D28 X 30	61002263		
26	Hexagonal nut; M4 SELBSTSICHERND	21 05 300		
27	Locking nut; D38 X 53; G 3/4"	61004061	4	From machine no.: 218 571
28	Locking nut; D38 X 28; G 3/4"	61004059	4	to machine no.: 218 570
29	Locking ring; D49 X 28	61002023	4	to machine no.: 218 570
30	Locking ring; D49 X 53	61002391	4	From machine no.: 218 571



70200640-00

WKT 1000**Pressure boiler**

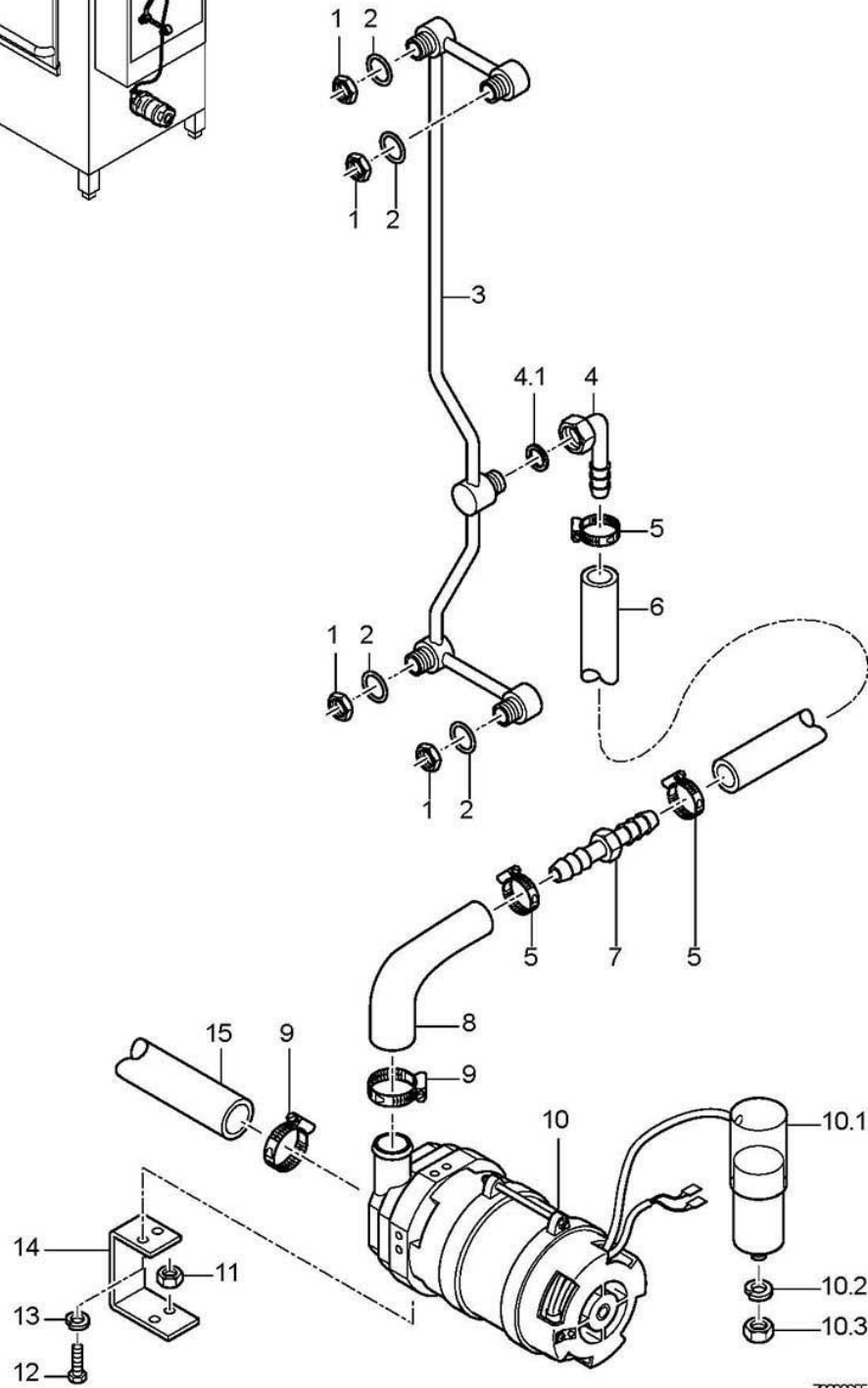
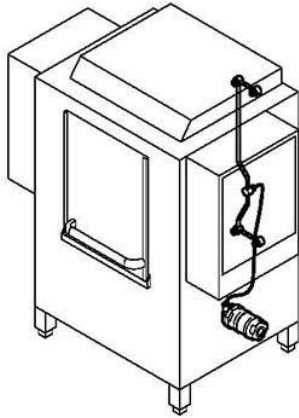
Item.	Designation	Parts no.:	Pc.	Notes
1	Y-hose socket; D13	29 06 526		
2	Hose clamp; D12-22 X 9	28 02 105		
3	Industrial hose; DN13 X 3,5	40 02 035		1400 mm; "By-the-metre" goods
4	Reducing nipple; G 1/2" X G 3/4"; SW27	61003430	2	
5	Gasket; D21 X D28 X 2,0	27 09 011		
6	O-ring; 43 X 7,0	27 07 088		
7	Heating element cranked 3,0kW; 230V/400V/3	31 03 100		
7	Heating element cranked 3,0kW; 240V/420V/3	31 03 101		
7	Heating element cranked 3,0kW; 200V/346V/3	31 03 097		
7	Heating element cranked 3,0kW; 254V/440V/3	31 03 102		
7	Heating element cranked 6,0kW; 230V/400V/3	31 03 017		
7	Heating element cranked 6,0kW; 240V/420V/3	31 03 043		
7	Heating element cranked 6,0kW; 200V/346V/3	31 03 046		
7	Heating element cranked 6,0kW; 254V/440V/3	31 03 034		
7	Heating element cranked 9,0kW; 230V/400V/3	31 03 018		
7	Heating element cranked 9,0kW; 240V/420V/3	31 03 057		
8	Cable gland; PG13,5; 6-12 MM; IP68	31 10 040		
9	Clamping plate; D43 X D80 X 4,0	55 19 018		
10	Hexagonal nut; PG13,5	31 10 041		
11	Hexagonal nut; M5	21 01 203		
12	Element cover; 50 X D67 X 89,5	31 03 014		
13	Safety thermostat; 160 GRAD C -12K "AUS"	31 25 030	2	
14	Boiler cpl., 2-hole; 12 KW; 480 LG	55 12 032		incl. item 14.1 – 14.2
14.1	Gasket; D10 X D18 X 1,5	27 03 003		
14.2	Hexagon screw; M10 X 16; A70	20 01 352		
15	Suction elbow	55 09 063		incl. item 15.1 - 15.2
15.1	Union nut; G 1/2" X D12,2; SW24	29 07 201		
15.2	Cutting ring; D12 X 10	29 07 300		
16	Hose clamp; D12-22 X 9	28 02 105		
17	Industrial hose; DN13 X 3,5	40 02 035		300 mm; "By-the-metre" goods
18	Cable tie; 200 X 4,7	31 20 015		
19	Boiler inlet elbow, cpl.	55 09 054		incl. item 19.1 – 19.2
19.1	Union nut; G 1/2" X D12,2; SW24	29 07 201		
19.2	Cutting ring; D12 X 10	29 07 300		
20	Industrial hose; DN13 X 3,5	40 02 035		300 mm; "By-the-metre" goods
21	Hose clamp; D50-215 X 12	28 02 126		



70200664-00

WKT 1000**Pressure-independent boiler**

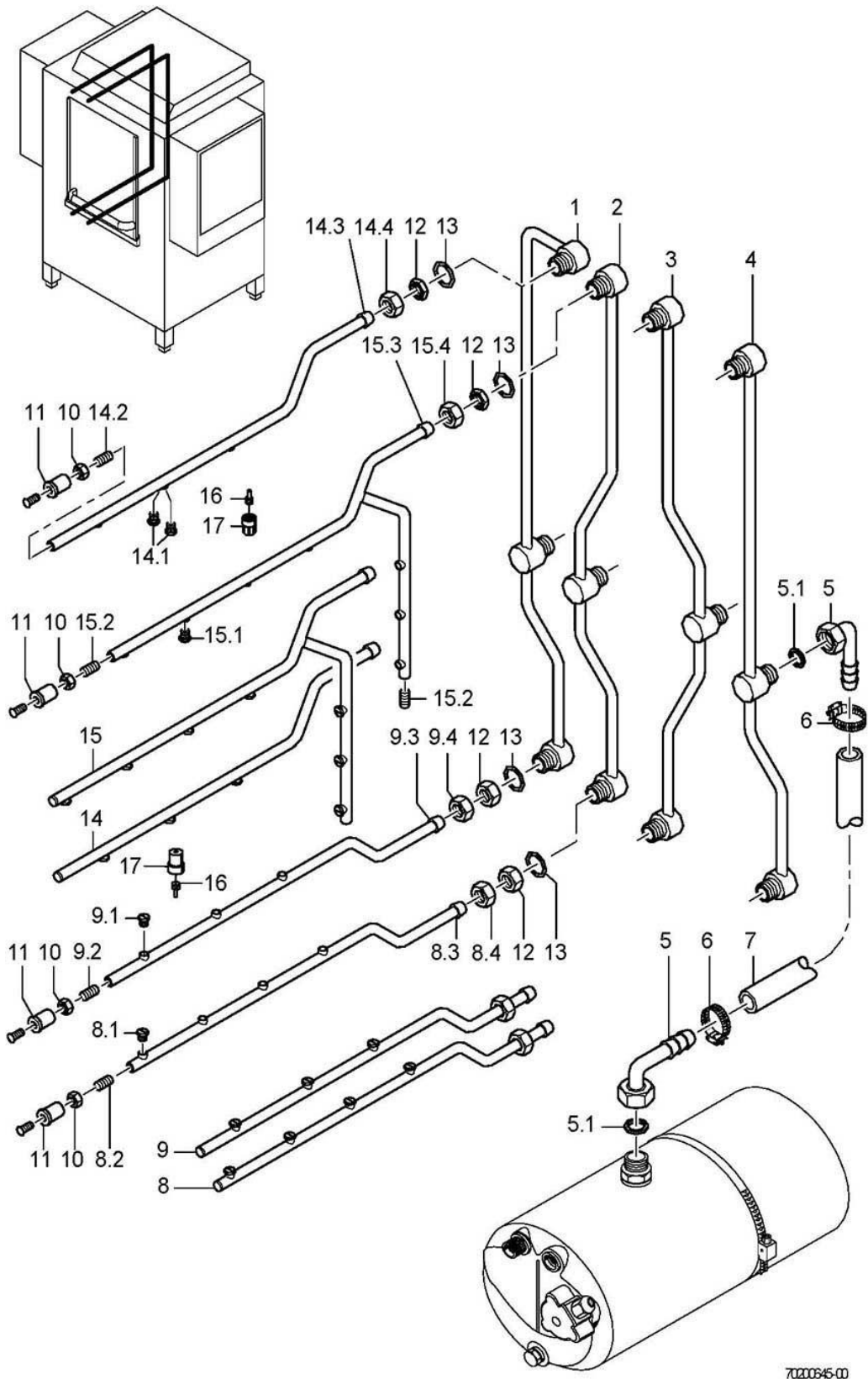
Item.	Designation	Parts no.:	Pc.	Notes
1	Water inlet, 3-part set	55 31 007		incl. item 1.1 - 1.2
1.1	Gasket; D21 X D28 X 2,0	27 09 011		replaced by 55 31 007
1.1	Gasket; D20,5 X D28,5 X 2,0	27 01 002		replaced by 55 31 007
1.1	O-ring; 20 X 3	27 07 031		
1.2	Hose clamp; D12-22 X 9	28 02 105		
2	Hose clamp; D12-22 X 9	28 02 105		
3	Hose bend; DN12,5 X 4,0	40 03 056		adapt
4	Pressureless boiler cpl.	80002128		
4.1	Hexagon screw; M10 X 16; A70	20 01 352		incl. item 4.1 - 4.3
4.2	Gasket; D10 X D18 X 1,5	27 03 003		
4.3	Floating switch installation set	55 28 255		incl. item 4.3.1 - 4.3.4
4.3.1	Nut; M14 X 2, D26,8 X 8	60003989		
4.3.2	Ring; D14,3 X D32 X 11	60003872		
4.3.3	O-ring; 23 X 3,5	27 07 093		
4.3.4	O-ring; 11,11 X 1,78	27 07 079		
5	Gasket; D21 X D28 X 2,0	27 09 011	2	
6	Hose nipple; D26 X 41; G 1/2"; SW27	80001403		
7	O-ring; 43 X 7,0	27 07 088		
8	Heating element cranked 3,0kW; 230V/400V/3	31 03 100		
8	Heating element cranked 3,0kW; 240V/420V/3	31 03 101		
8	Heating element cranked 3,0kW; 200V/346V/3	31 03 097		
8	Heating element cranked 3,0kW; 254V/440V/3	31 03 102		
8	Heating element cranked 6,0kW; 230V/400V/3	31 03 017		
8	Heating element cranked 6,0kW; 240V/420V/3	31 03 043		
8	Heating element cranked 6,0kW; 200V/346V/3	31 03 046		
8	Heating element cranked 6,0kW; 254V/440V/3	31 03 034		
8	Heating element cranked 9,0kW; 230V/400V/3	31 03 018		
8	Heating element cranked 9,0kW; 240V/420V/3	31 03 057		
9	Blind flange	60002787		incl. item 9.1 - 9.3
9.1	O-ring; 43 X 7,0	27 07 088		
9.2	Locking washer; D43 X D80 X 4,0	01 17 003		
9.3	Hexagonal nut; M5	21 01 203		
10	Cable gland; PG13,5; 6-12 MM; IP68	31 10 040		
11	Clamping plate; D43 X D80 X 4,0	55 19 018		
12	Hexagonal nut; PG13,5	31 10 041		
13	Hexagonal nut; M5	21 01 203		
14	Element cover; 50 X D67 X 89,5	31 03 014		
15	Hose clamp; D50-215 X 12	28 02 126		
16	Boiler inlet elbow, cpl.	55 09 054		incl. item 16.1 - 16.2
16.1	Union nut; G 1/2" X D12,2; SW24	29 07 201		
16.2	Cutting ring; D12 X 10	29 07 300		
17	Screw plug; G 1/2"	30 08 303		



7020865-00

WKT 1000**Rinse pump**

Item.	Designation	Parts no.:	Pc.	Notes
1	Hexagonal nut; G 3/8" X 5,5; SW22	30 09 200		
2	O-ring; 16 X 2,5	27 07 001		
2	Gasket; D17 X D24 X 2,0	27 09 009		
3	Rinse manifold	80002033		L-R
3	Rinse manifold	80002034		R-L
4	Hose nipple, angled; D18	60002474		
4.1	Gasket; D16 X D24 X 3,0	80002241		
5	Hose clamp; D12-22 X 9	28 02 105		
6	Industrial hose; DN13 X 3,5	40 02 035		1000 mm; "By-the-metre" goods
7	Hose socket; D13 X D13	29 06 509		
8	Reducing elbow; DN13 X DN25	62002145		
9	Hose clamp; D24-44 X 12	28 02 309		
10	Pump 0.270 kW 8/0; 220/240V/1/50HZ	31 02 477		incl. item 10.1 - 10.3
10	Pump 0.270 kW 8/0; 200V/1/60HZ	31 02 447		incl. item 10.1 - 10.3
10	Pump 0.270 kW 8/0; 200V/1/50HZ	31 02 446		incl. item 10.1 - 10.3
10	Pump 0.270 kW 8/0; 220/240V/1/60HZ	31 02 445		incl. item 10.1 - 10.3
10.1	Capacitor; 5 MIKRO F	31 13 099		
10.2	Spring washer; B8	23 03 301		
10.3	Hexagonal nut; M8	21 01 305		
11	Hexagonal nut; M5 SELBSTSICHERND	21 05 302		
12	Hexagon screw; M6 X 16; A70	20 01 306		
13	Spring washer; B6	23 03 300		
14	Pump holder; 2,0 X 45 X 111,57	80001482		
15	Reinforced hose; DN25 X 4,5	40 01 038		50 mm; "By-the-metre" goods

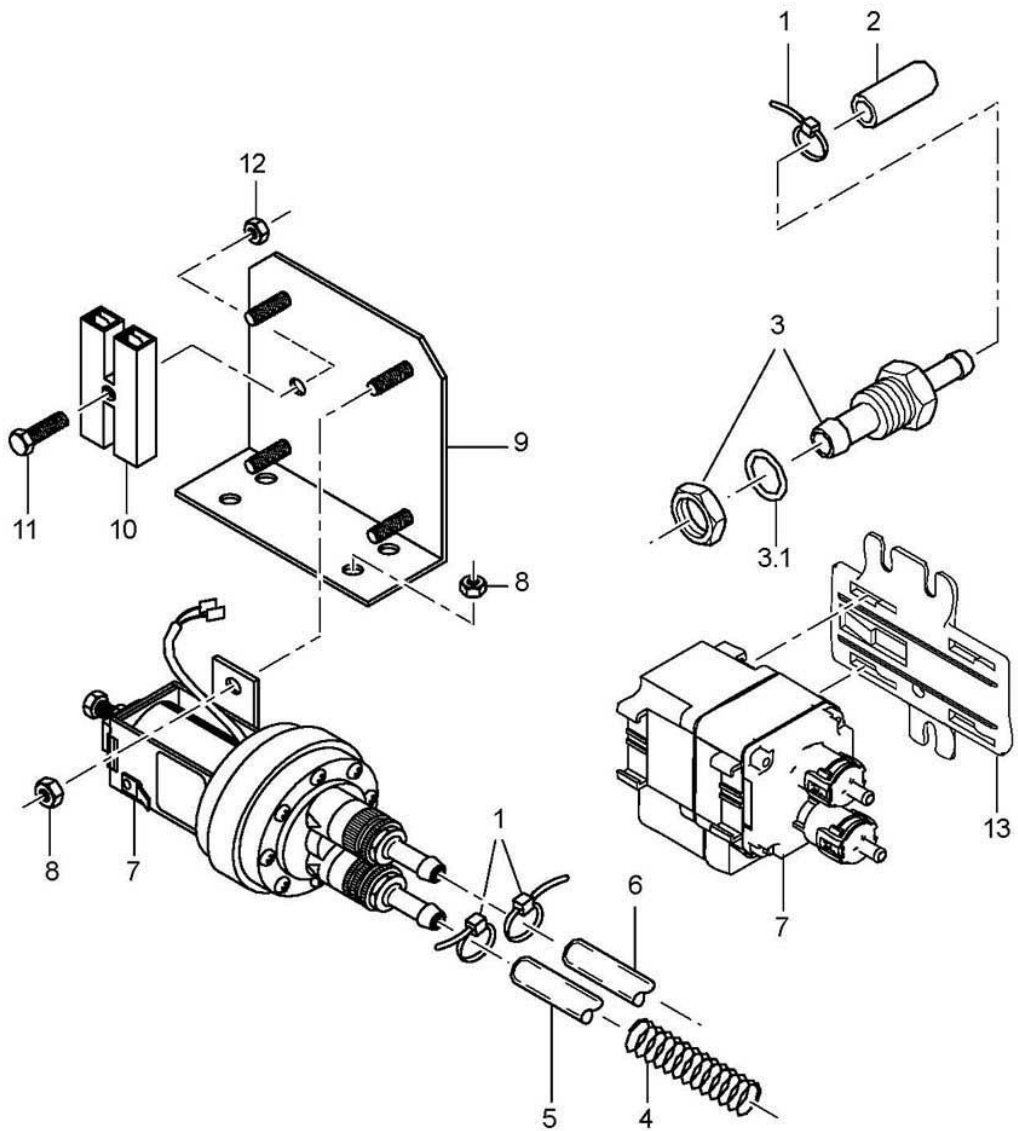
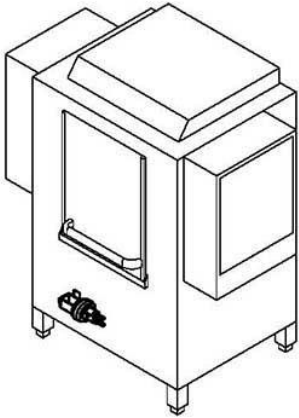


70200646-00

WKT 1000

Rinse system

Item.	Designation	Parts no.:	Pc.	Notes
1	Rinse manifold left; 593 LG	70200188		to machine no.: 219 406 R-L
1	Rinse manifold left	70200403		From machine no.: 219 661 R-L
2	Rinse manifold right cpl.; 593 LG	70200187		R-L
3	Rinse manifold cpl.	70200245		to machine no.: 219 661 L-R
3	Rinse manifold left	70200423		From machine no.: 219 661 L-R
4	Rinse manifold cpl.	70200244		to machine no.: 219 661 L-R
4	Rinse manifold	70200401		From machine no.: 219 661 L-R
5	Hose nipple, angled; D18	60002474	4	incl. item 5.1
5.1	Gasket; D16 X D24 X 3,0	80002241		
6	Hose clamp; D12-22 X 9	28 02 105		
7	Industrial hose; DN13 X 3,5	40 02 035		1300 mm; "By-the-metre" goods
8	Rinse pipe bottom cpl.	70200416		incl. item 8.1 - 8.4
8.1	Flat jet nozzle; 1/16 NPT; SW10	29 10 312	4	
8.2	Threaded stud; M9 X 15	20 30 504		
8.3	Cutting ring; D13 X 10; DN10	29 07 303		
8.4	Union nut; G 3/8" X D10,2; SW22	29 07 200		
9	Rinse pipe bottom cpl.	70200415		incl. item 9.1 - 9.4
9.1	Flat jet nozzle; 1/16 NPT; SW10	29 10 312	3	
9.2	Threaded stud; M9 X 15	20 30 504		
9.3	Cutting ring; D13 X 10; DN10	29 07 303		
9.4	Union nut; G 3/8" X D10,2; SW22	29 07 200		
10	Hexagonal nut; M4 SELBSTSICHERND	21 05 300		
11	Guide socket for rinse arm; D28 X 30	61002343	4	
12	Hexagonal nut; G 3/8" X 5,5; SW22	30 09 200		
13	O-ring; 16 X 2,5	27 07 001		
13	Gasket; D17 X D24 X 2,0	27 09 009		
14	Rinse pipe top cpl.	70200418		incl. item 14.1 - 14.4
14.1	Flat jet nozzle; 1/16 NPT; SW10	29 10 312	6	
14.2	Threaded stud; M9 X 15	20 30 504		
14.3	Cutting ring; D13 X 10; DN10	29 07 303		
14.4	Union nut; G 3/8" X D10,2; SW22	29 07 200		
15	Rinse pipe top cpl.; 8 DÜSEN	70200626		incl. item 15.1 - 15.4
15.1	Flat jet nozzle; 1/16 NPT; SW10	29 10 312	8	
15.2	Threaded stud; M9 X 15	20 30 504	2	
15.3	Cutting ring; D13 X 10; DN10	29 07 303		
15.4	Union nut; G 3/8" X D10,2; SW22	29 07 200		
16	Spray jet swirl	65002755		older machines
17	Rinse jet cap	65002754		older machines

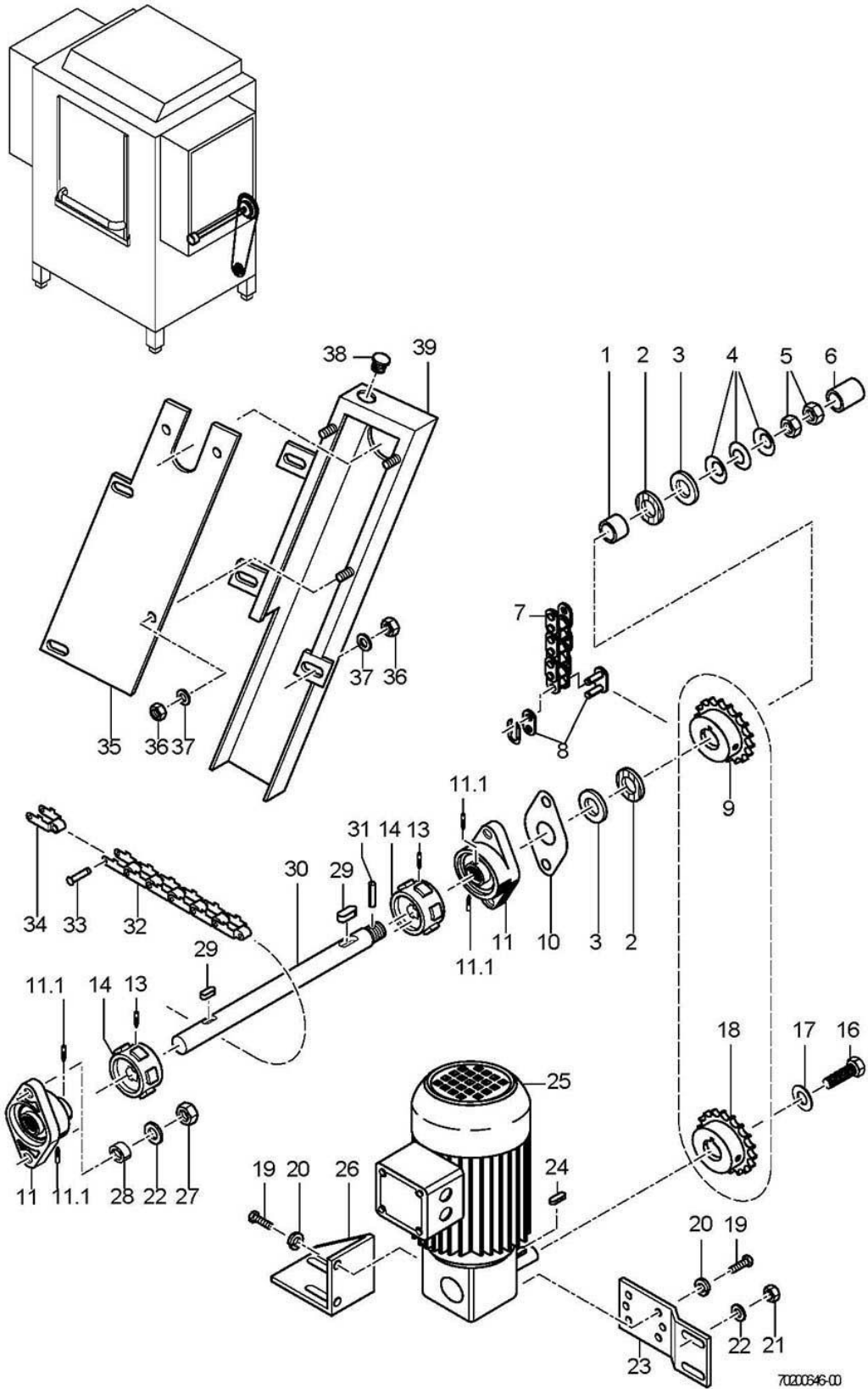


70200644-00

WKT 1000

Dosage

Item.	Designation	Parts no.:	Pc.	Notes
1	Wire hose clamp; D8,6 X 1	28 02 348		
2	End cap; D5,7 X 25,4	35 06 180		
3	Detergent inlet	55 25 040		incl. item 3.1
3.1	O-ring; 16 X 2,5	27 07 001		
4	Spring; D0,8 X DI10 X 280	62002419		
5	Hose; DN5 X 1,5	40 01 024		200 mm; "By-the-metre" goods
6	Hose; DN5 X 1,5	40 01 024		2000 mm; "By-the-metre" goods
7	ELT 10 replacement set	55 28 278		
8	Hexagonal nut; M5 SELBSTSICHERND	21 05 302		
9	Support for dispenser	61004653		
10	Coupler piece, insulated; 250V;20AWG;25A;2-POLIG	31 12 021		
11	Cylinder head screw, M3 X 16	20 09 205		
12	Hexagonal nut; M3	21 01 301		
13	Bracket; 75 X 82,5	80002906		From machine no.: 467 578

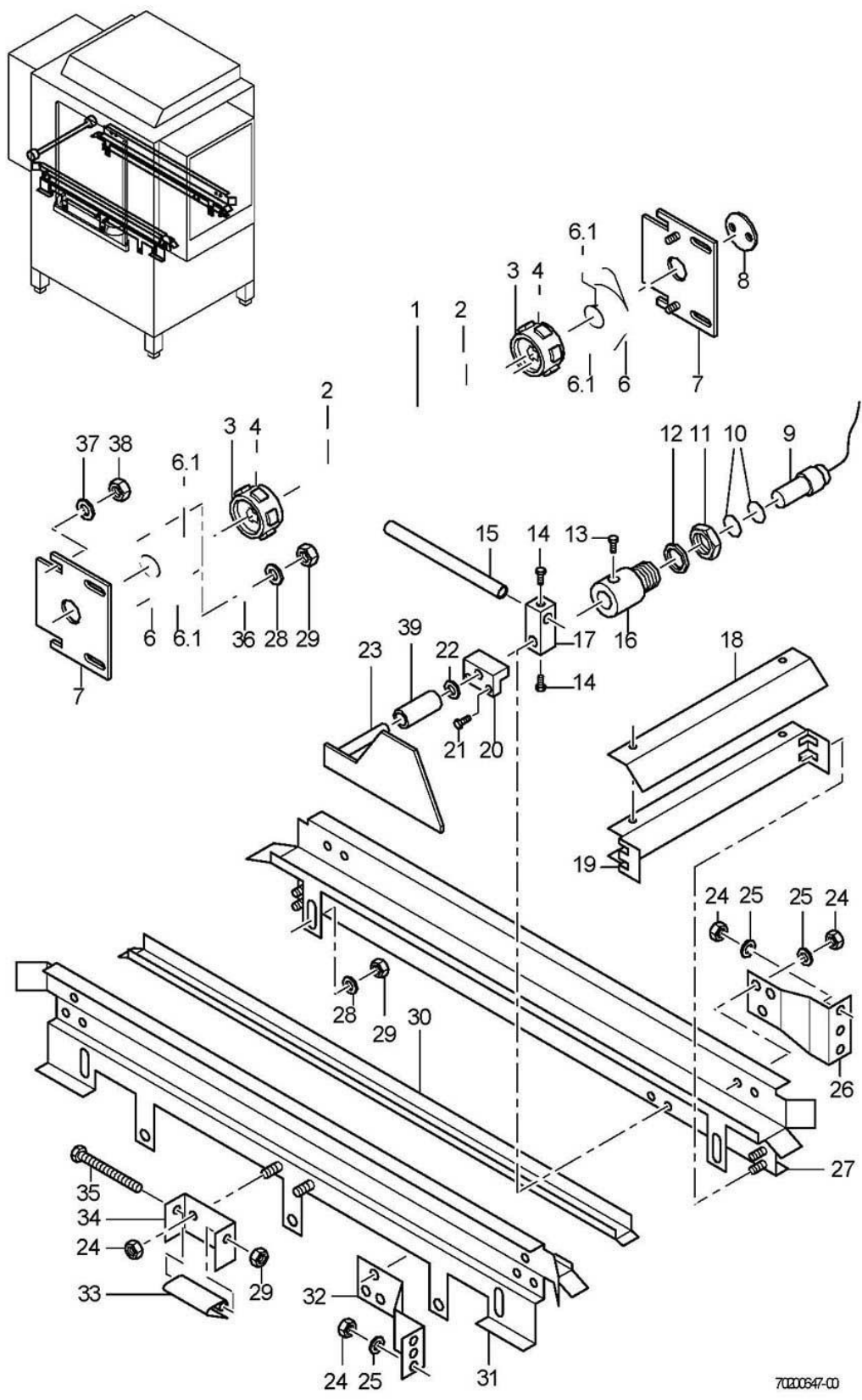


70200646-00

WKT 1000

Drive I

Item.	Designation	Parts no.:	Pc.	Notes
1	Bushing; D23,9 X 8	70200369		
2	Brake lining; D50 X 2	70200368		
3	Brake disc; D20,2 X D50 X 4,0	70200367		
4	Cup spring; D40 X 20,4 X 1,5	22 10 301		
5	Hex nut; M20 X 1,5	21 02 310		
6	Cap; D30 X 25	35 03 028		
7	Roller chain; 3/8" X 7/32"	28 10 038		1544mm; "By-the-metre" goods
8	Master link; 06 B-1	28 10 037		
9	Chain wheel 20 teeth; 3/8" X 7/32" X 5,3	70200370		
10	Gasket; 1,5 X 60 X 112	70200404		
11	Bearing with housing	28 01 027		incl. item 11.1
11.1	Grub screw; M6 X 8	20 30 304	2	
13	Grub screw; M6 X 16	20 30 302		
14	Chain wheel; D90 X 35	70200422		
16	Hexagon screw; M5 X 16; A70	20 01 309		
17	Spring washer; B5	23 03 302		
18	Chain wheel; 3/8" X 7/32"	28 10 030		
19	Hexagon screw; M8 X 16; A70	20 01 302		
20	Spring washer; B8	23 03 301		
21	Hexagonal nut; M6 SELBSTSICHERND	21 05 304		
22	Washer; D6,4 X D18 X 1,6	22 05 302		
23	Bracket; 2,0 X 80 X 175	70200217		
24	Parallel key; A4 X 4 X 12	26 10 002		
25	Reversing motor 0,09kW; 220-240V/380-420V/50HZ	31 16 021		
25	Reversing motor 0,09kW; 200-242V/346-420V	31 16 039		60 Hz
25	Reversing motor 0,09kW; 200V/346V/3/50HZ	31 16 053		
26	Support for reversing motor; 2,0 X 123 X 134	70200218		
27	Hexagonal nut; M8 SELBSTSICHERND	21 05 306		
28	Pipe; D10 X 0,75 X 10	70200405		
29	Parallel key; A6 X 6 X 25	70002435		
30	Shaft; DN20 X 690	70200371		
31	Heavy type dowel pin; D5 X 40	26 08 301		
32	Link chain; 56 GLIEDER	70200425		WKT 1000 short
32	Link chain; 65 GLIEDER	70200462		
33	Bolt; D6 X 30	70200383		
34	Chain link; 17,5 X 30 X 57	70200382		
35	Bottom chain protection R-L; 1,5 X 162 X 449	70200453		R-L
35	Bottom chain protection; 1,5 X 162 X 449	70200458		L-R
36	Hexagonal nut; M4 SELBSTSICHERND	21 05 300		
37	Washer; D4,3 X D8 X 0,5	22 02 302		
38	Cap black; D19,6 X 22 X 1,5	35 03 004		
39	Chain protection; 85 X 50 X 745,5	70200455		R-L
39	Chain protection; 85 X 50 X 745,5	70200460		L-R

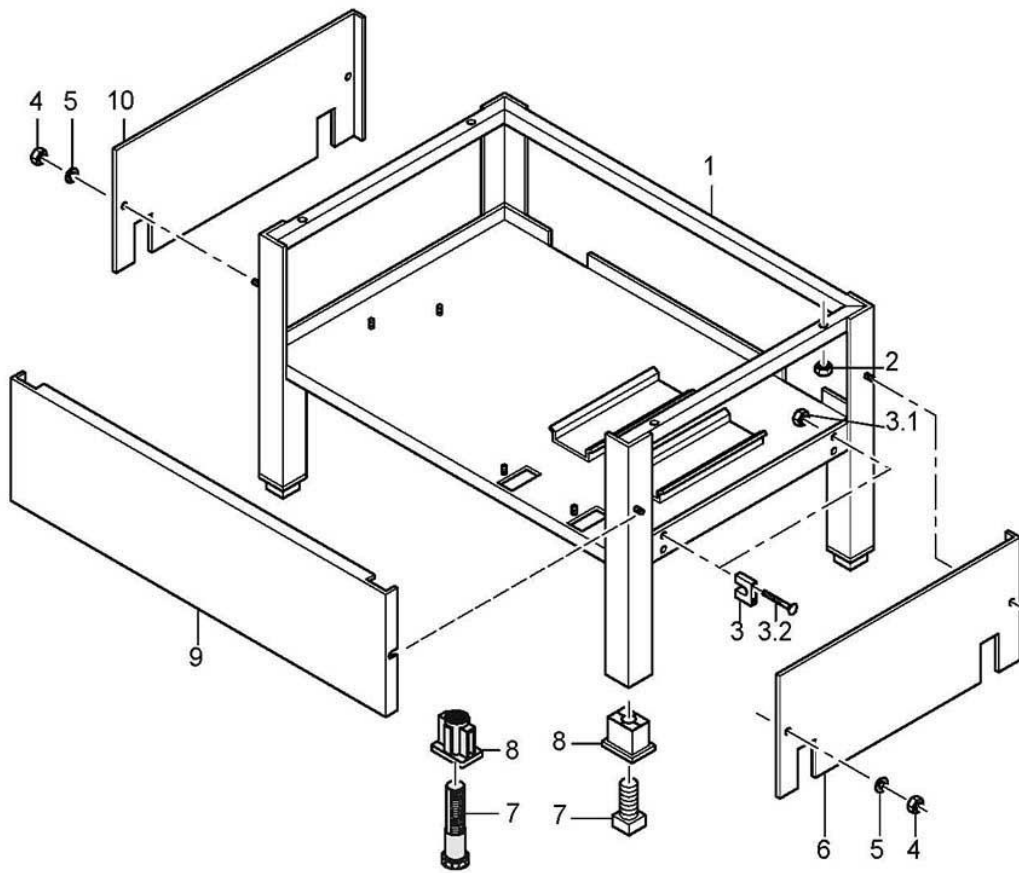
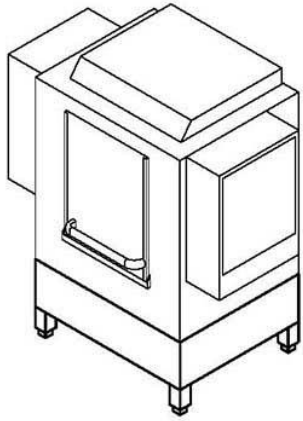


7000647-00

WKT 1000

Drive II

Item.	Designation	Parts no.:	Pc.	Notes
1	Reversing shaft; DN20 X 565	70200372		
2	Parallel key; A6 X 6 X 25	70002435		
3	Chain wheel; D90 X 35	70200422		
4	Grub screw; M6 X 16	20 30 302		
6	Bearing with housing	28 01 027		incl. item 6.1
6.1	Grub screw; M6 X 8	20 30 304	2	
7	Plate; 1,5 X 105 X 115	70200393	2	
8	Cover; D56 X 1,5	80001408		
9	Magnetic switch; KABELLÄNGE 2500	31 24 134		
10	O-ring; 7 X 1,5	27 07 014		
11	Hexagonal nut; G 3/8" X 5,5; SW22	30 09 200		
12	Gasket; D17 X D24 X 2,0	27 09 016		
13	Hexagon screw; M5 X 10; A70	20 01 300		
14	Hexagon screw; M6 X 10; A70	20 01 332		
15	Switching rod	70005398		incl. magnet
16	Bush; D22 X 32	70200219		
17	Fastening for switching tube; 16 X 16 X 40	70200413		
18	Splash guard; 1,0 X 235 X 500	70200465		
19	Cover	70200407		
20	Bearing for limit switch; 35 X 36 X 40	70200347		
21	Hexagon screw; M5 X 16; A70	20 01 309		
22	Washer; D8,4 X D17 X 1,6	22 01 303		
23	Rocker right	70200387		L-R
23	Rocker left	70200388		R-L
24	Hexagonal nut; M6 SELBSTSICHERND	21 05 304		
25	Washer; D6,4 X D12,5 X 1,6	22 01 302		
26	Rear support right; 2,0 X 93 X 198,5	70200046		
26	Rear support left; 2,0 X 93 X 198,5	70200211		
27	Rack guide rear; 1245 LG	70200451		
27	Rack guide rear; 1035,5 LG	70200241		WKT 1000 short
28	Washer; D8,4 X D17 X 1,6	22 01 303		
29	Hexagonal nut; M8 SELBSTSICHERND	21 05 306		
30	Support f/toothed belt, front; 1,0 X 72 X 670	70200354		
30	Support f/toothed belt, rear; 1,0 X 72 X 670	70200359		
31	Rack guide front; 1245 LG	70200450		
31	Rack guide front; 1035,5 LG	70200239		WKT 1000 short
32	Front support right; 2,0 X 93 X 186	70200047		
32	Front support left; 2,0 X 93 X 186	70200212		
33	Stop; 67 BREIT	70200190		
34	Bracket; 2,0 X 50 X 124	70200078		
35	Hexagon screw; M8 X 80; A70	20 01 364		
36	Pipe; D10 X 0,75 X 10	70200405		
37	Washer; D6,4 X D18 X 1,6	22 05 302		
38	Hexagonal nut; M6 SELBSTSICHERND	21 05 304		
39	Bush; D10 X 0,75 X 37	70200667		

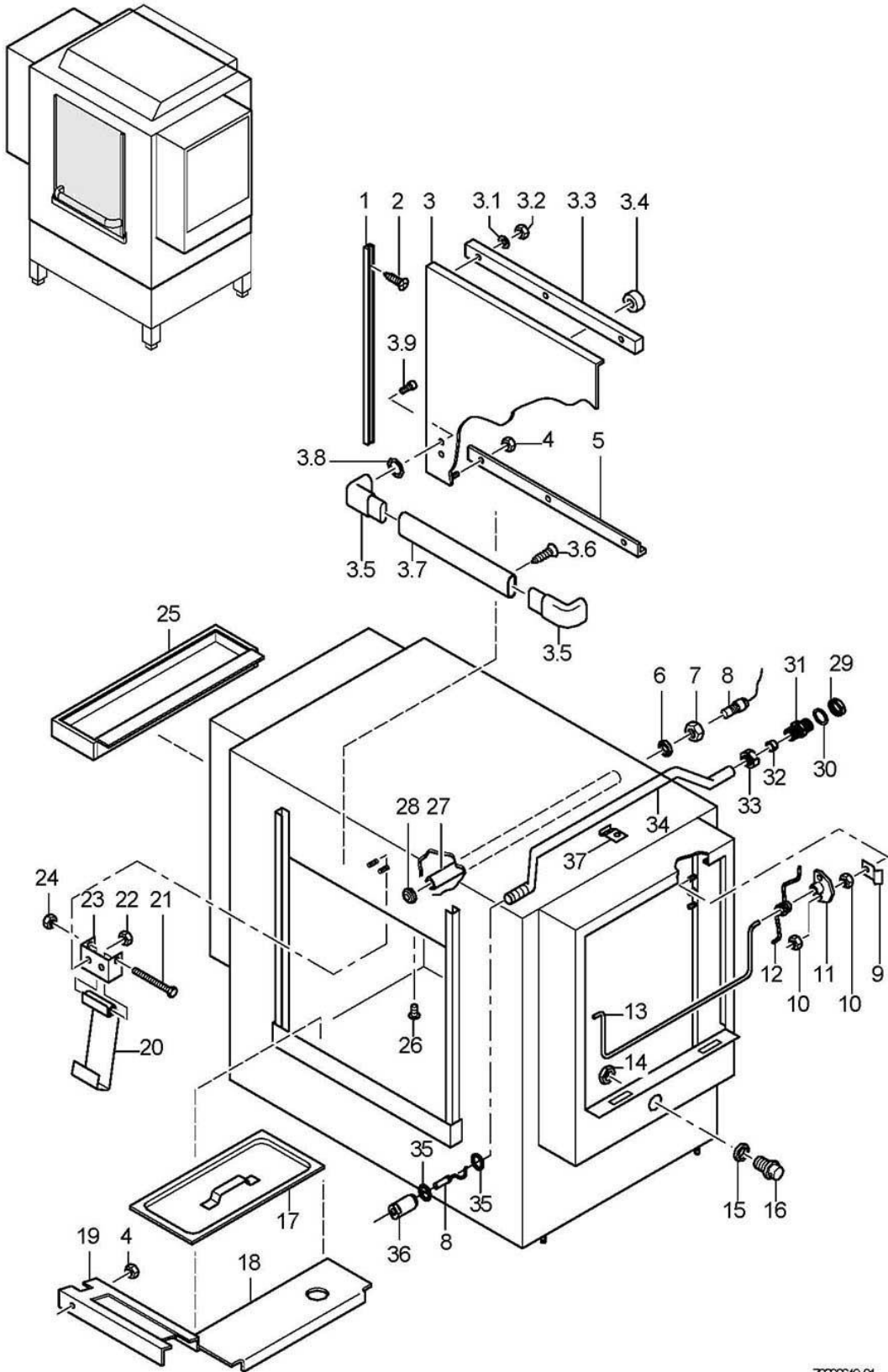


70200648-00

WKT 1000

Panelling

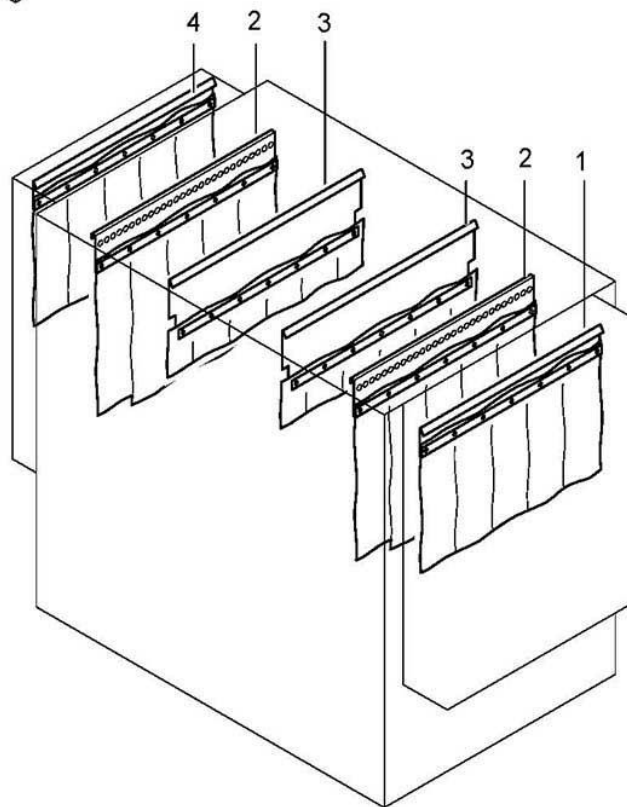
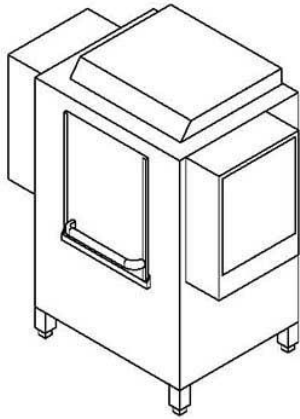
Item.	Designation	Parts no.:	Pc.	Notes
1	Base frame; 420 X 644 X 990	70200002		
2	Hexagonal nut; M6 SELBSTSICHERND	21 05 304		
3	Support	61003179	4	incl. item 3.1 - 3.2
3.1	Hexagonal nut; M5	21 01 303		
3.2	Pan head screw; M5 X 16	20 10 224		
4	Hexagonal nut; M4 SELBSTSICHERND	21 05 300		
5	Washer; D4,3 X D8 X 0,5	22 02 302		
6	Panel right; 0,8 X 285 X 663	70200063		
7	Adjustable foot; G 3/4"; 32 X 32 X 100	35 01 064	4	
8	Threaded insert; G 3/4"; 42 X 62 X 50	35 01 063	4	
9	Housing panel front; 0,8 X 336,5 X 1064	70200529		
10	Panel left cpl.; 0,8 X 285 X 663	70200057		
o.P.	Back panel; 1,0 X 1222 X 1390	70200181		WKT 1000 short; R-L
o.P.	Back panel; 1,0 X 1222 X 1390	70200308		WKT 1000 short; R-L
o.P.	Back panel; 1,0 X 1222 X 1390	70200467		R-L
o.P.	Back panel; 1,0 X 1222 X 1390	70200468		L-R



7000649-01

WKT 1000**Door, filters**

Item.	Designation	Parts no.:	Pc.	Notes
1	Sliding rail; 18,3 X 19,7 X 715 LG	70200250	2	
2	Sheet metal screw; ST 2,9 X 6,5	20 20 308		
3	Sliding door	70200065		incl. item 3.1 - 3.9
3.1	Washer; D5,3 X D10 X 1,0	22 01 300		
3.2	Hexagonal nut; M5 SELBSTSICHERND	21 05 302		
3.3	Cover; 10,5 X 25 X 548	70200530		
3.4	Magnet support	70200366		
3.5	Connection corner; 45 X 55 X 103,5	70200109	2	
3.6	PT screw; KB 40 X 12	20 17 302		
3.7	Oval-profile; 17 X 45 X 1,2 X 403	70200302		
3.8	O-ring; 7 X 2,5	27 07 013		
3.9	PT screw; KB 50 X 16	20 17 301		
4	Hexagonal nut; M5 SELBSTSICHERND	21 05 302		
5	Elbow; 1,25 X 37,5 X 545	70200208		
6	Gasket; D17 X D24 X 2,0	27 09 009		to machine no.: 463 075
7	Hexagonal nut; G 3/8" X 5,5; SW22	30 09 200		to machine no.: 463 075
8	Magnetic switch; KABELLÄNGE 2500	31 24 134		
9	Clamp; 1,5 X 20 X 27	62000498	2	
10	Hexagonal nut; M4 SELBSTSICHERND	21 05 300		
11	Bearing; D40 X 9	70200195		
12	Spring; 100 X 25	70200309		
13	Bracket; D8 X 770,5	70200193		
14	Hex nut; G 3/4" X 5,0; SW32	61002626		
15	Gasket; D27 X D34 X 2,0	27 09 025		
16	Screwed socket for splash case; D32 X 42	70200346		
17	Scrap tray	61003085	4	
18	Support for surface strainer; 1,5 X 152 X 509	70200051		
19	Support plate; 45 X 80 X 995	70200172		
20	Notch lever	70200077		
21	Hexagon screw; M8 X 80; A70	20 01 364		
22	Hexagonal nut; M6 SELBSTSICHERND	21 05 304		
23	Bracket; 2,0 X 50 X 124	70200078		
24	Hexagonal nut; M8 SELBSTSICHERND	21 05 306		
25	Filter insert; 1,25 X 175 X 462	70200429		
26	Raised head screw; M4 X 8	20 10 310		
27	Limit switch rod; D18 X 1 X 649,5	70200176		to machine no.: 463 075
28	Bushing socket; D8 X 7 X 11 X 14	31 10 101		to machine no.: 463 075
29	Hexagonal nut; G 1/2" X 8,0; SW27	30 09 201		From machine no.: 463 076
30	Gasket; D20,9 X D27 X 2,0	27 04 006		From machine no.: 463 076
31	Double nipple; G 1/2" X 38; SW27	30 11 301		From machine no.: 463 076
32	Cutting ring; D12 X 10	29 07 300		From machine no.: 463 076
33	Union nut; G 1/2" X D12,2; SW24	29 07 301		From machine no.: 463 076
34	Cable pipe; D12 X 1,5 X 632	70200669		From machine no.: 463 076
35	O-ring; 7 X 1,5	27 07 014	2	From machine no.: 463 076
36	Coupling nut; M12 X 1,0 X D8,2; SW13	55 18 032		From machine no.: 463 076
37	Pipe clamp; 1,25 X 20 X 49	55 04 057		From machine no.: 463 076

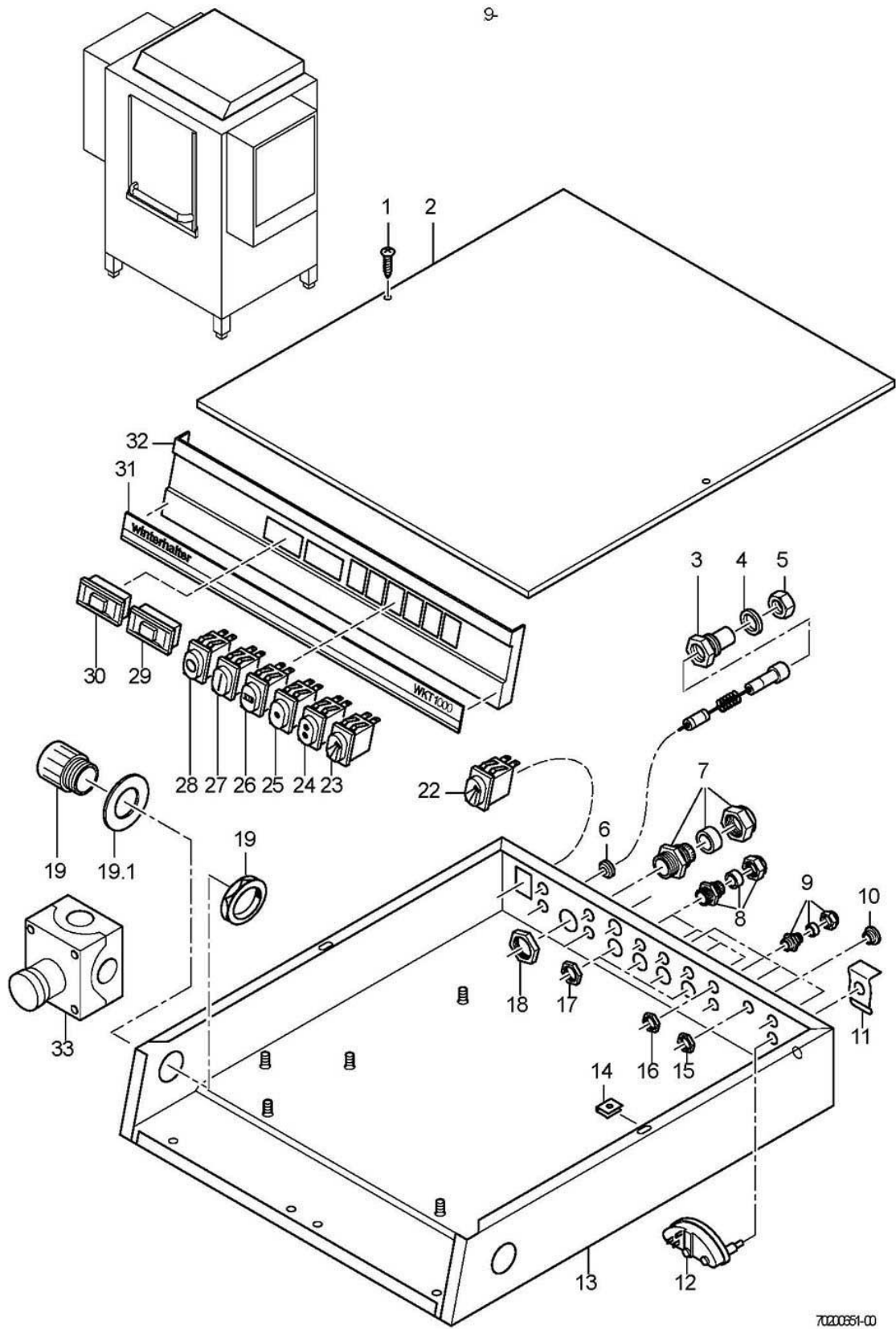


70200660-01

WKT 1000

Curtains

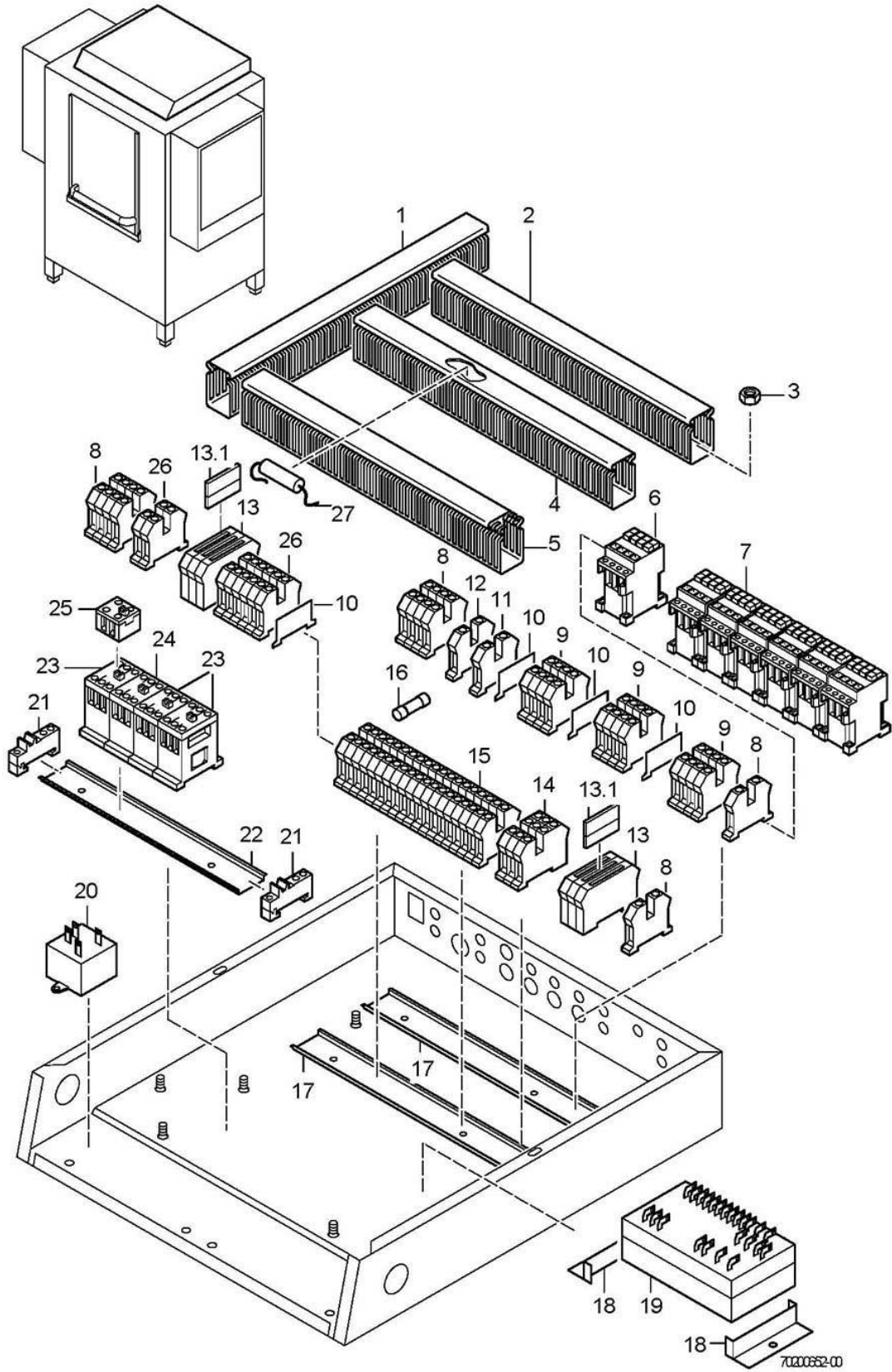
Item.	Designation	Parts no.:	Pc.	Notes
1	Exterior curtain cpl. Inlet	70200291		
2	Curtain middle	70200343	2	
3	Curtain short (black)	70200336	2	
4	Exterior curtain cpl. Outlet	70200289		



7020051-00

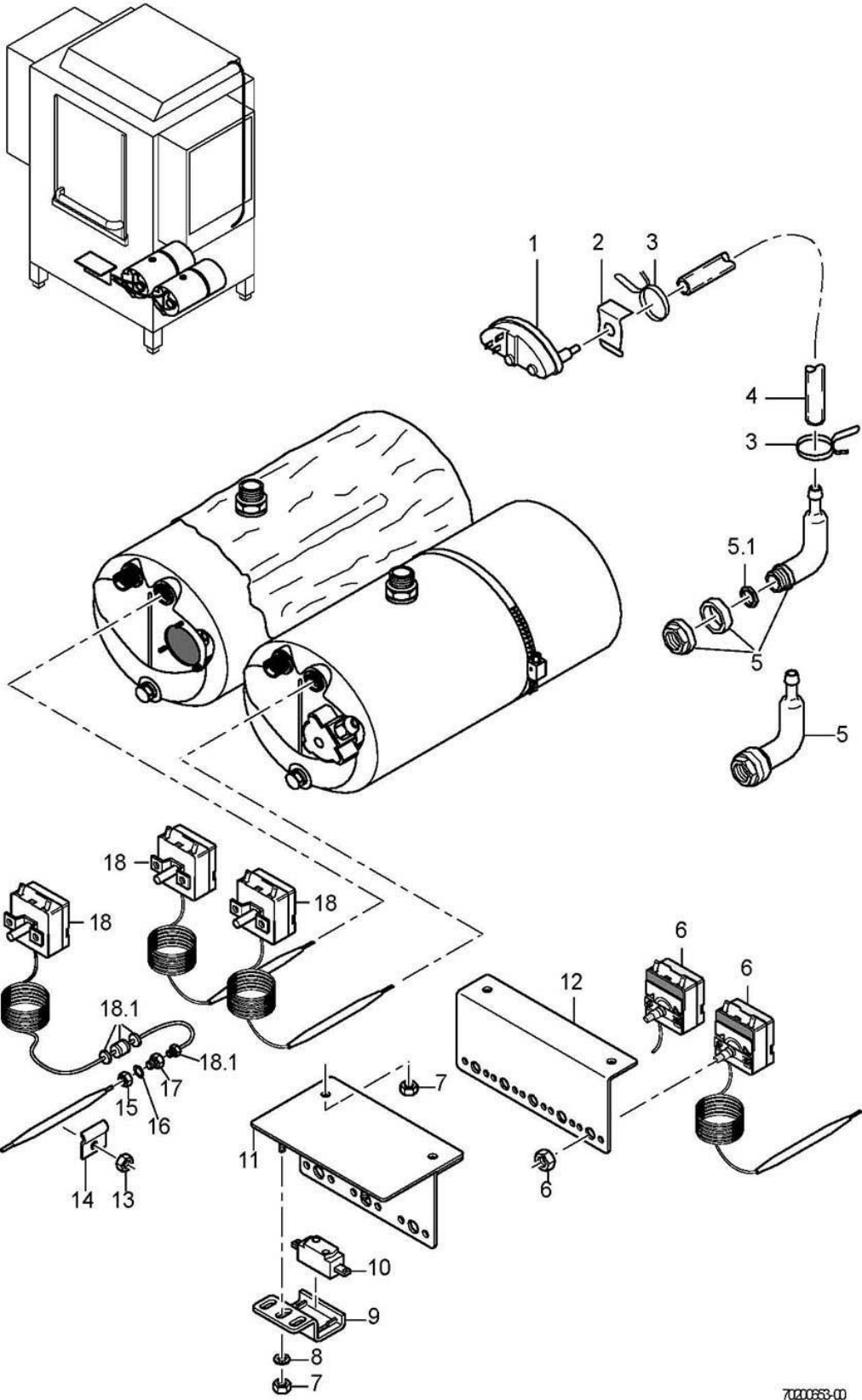
WKT 1000**Electrical parts I**

Item.	Designation	Parts no.:	Pc.	Notes
1	Sheet metal screw; ST 3,9 X 16	20 20 300	2	
2	Switch box cover; 0,8 X 598 X 547	70200081		
3	Gland for thermometer; M14 X 1,0 X 35,5; SW19	32 01 030		
4	Gasket; D14,2 X D20 X 2,0	27 09 036		
5	Hexagonal nut; M14 X 1,0 X 5,0	31 25 002		
6	Bushing socket	31 10 105		
7	Cable gland; PG29; 16-25 MM; IP68	31 10 123		
8	Cable gland; PG16; 10-14 MM; IP68	31 10 049		
9	PG9 cable gland; PG9; 4-8 MM; IP68	31 10 042		
10	Hexagon bolt; PG9	31 10 021		
11	Retaining spring for leveller	31 26 001		
12	Level control; 250V/50-60HZ	31 26 003		
13	Control box housing cpl.; 108 X 520 X 600	70200479		
14	Sheet metal nut; B 3,9	21 17 301		
15	Hexagonal nut; PG9	31 10 043		
16	Hexagonal nut; PG9	31 10 043		
17	Hexagonal nut; PG16; SW30;	31 10 110		
18	Hex nut; PG29	31 10 047		
19	Emergency off key; 30MM; ROT	31 24 193		
19.1	Emergency off plate; 60 X 1,0MM; ENGL./FRZ.	31 24 195		
22	Pressure key "manual rinsing"; 250V; AC; 2-POL; IP54	31 24 129		
23	Pressure switch "manual wash"; 250V; AC; 2-POL; IP54	31 24 128		
24	Pressure switch "progr. II"; 250V; AC; 2-POL; IP54	31 24 166		
25	Pressure switch -Progr. 1-; 250V; AC; 2-POL; IP54	31 24 165		
26	Pressure key "start"; 250V; AC; 1-POL/W; IP54	31 24 184		
27	Pressure key -OFF-; 250V; AC; 1-POL; IP54	31 24 161		
28	Pressure key -ON-; 250V; AC; 1-POL; IP54	31 24 160		
29	Thermometer 85 degrees; MESSLEITUNG 2500 LG	32 01 036		
30	Thermometer 58 degrees; MESSLEITUNG 2500 LG	32 01 035		
31	Strip label WKT 1000; 0,4 X 25 X 521	70200125		
32	Front screen; 20 X 108 X 530	61002069		Also order: pos. 31
33	"Emergency stop" button	31 24 244		to machine no.: 332 254



WKT 1000**Electrical parts II**

Item.	Designation	Parts no.:	Pc.	Notes
1	Cable channel; 65 HOCH X 46 BREIT	31 20 104		400 mm; "By-the-metre" goods
2	Cable channel; 65 HOCH X 46 BREIT	31 20 104		450 mm; "By-the-metre" goods
3	Hexagonal nut; M4	21 01 302		
4	Cable channel; 65 HOCH X 30 BREIT	31 20 103		450 mm; "By-the-metre" goods
5	Cable channel; 65 HOCH X 30 BREIT	31 20 103		450 mm; "By-the-metre" goods
6	Contacteur; A9-3S-1Ö; 230V/50-60HZ; 4KW	31 04 161		
6	Contacteur A16:3S: 1 N/C contact; 230V/50-60HZ; 7,5KW	31 04 162		star network
7	Contacteur A16:3S: 1 N/C contact; 230V/50-60HZ; 7,5KW	31 04 162	6	
7	Contacteur A16:3S: 1 N/C contact; 200V/50-60HZ; 7,5KW	31 04 163	6	Japan
8	Protective conductor terminal USKLG 5	31 09 064	10	
9	Universal terminal grey	31 09 057	12	
10	Isolating disk	31 09 066		
11	Universal terminal blue	31 09 058		
12	Universal terminal green/yell.	31 09 059		
13	Universal fuse clip	31 09 063	5	incl. item 13.1
13.1	Securing plug	31 09 072		
14	Double terminal, UK, 5-Twin	31 09 115	3	
15	Universal terminal grey	31 09 049	40	
16	Fine fuse, medium time lag; 250V; 2,0A; 5 X 20	31 11 042	2	
16	Fine fuse, medium time lag; 250V; 6,3A; 5 X 20	31 11 043	2	
17	Top hat rail; 7,5 X 35 X 2000	31 09 024		465 mm; "By-the-metre" goods
18	Bracket; 1,25 X 53,75 X 101,5	61003088		
19	Programme switch EPS1.1; 230V/50-60HZ	31 05 131		
19	Programme switch EPS1.1 V2.0; 200V/240V 50-60HZ	31 05 132		
20	Radio interference suppression capacitor; AC 250/440 VOLT	31 13 072		
21	Universal terminal	31 09 051		
22	Top hat rail; 7,5 X 35 X 2000	31 09 024		246 mm; "By-the-metre" goods
23	Mini contactor; 220V/50-60HZ; 240V/60H	31 04 115	3	
24	Mini contactor; 220V/50-60HZ; 240V/60H	31 04 114		
25	Modul	31 04 116		
26	Universal terminal blue	31 09 050	8	
27	Radio interference suppression capacitor; 33000 PF Y; 250 VOLT A	31 13 073		



7020863-00

WKT 1000**Electrical parts III**

Item.	Designation	Parts no.:	Pc.	Notes
1	Level control; 250V/50-60HZ	31 26 003		
2	Retaining spring for leveller	31 26 001		
3	Wire hose clamp; D8,6 X 1	28 02 348	2	
4	Hose; DN5 X 1,5	40 01 024		1100 mm; "By-the-metre" goods
5	Air chamber cpl.	55 04 024		incl. item 5.1
5.1	O-ring; 24 X 3,0	27 07 087		
5.1	Gasket; D26 X D36 X 2,0	27 01 003		replaced by 55 04 024
6	Safety thermostat; 160 GRAD C -12K "AUS"	31 25 030	2	
7	Hexagonal nut; M4 SELBSTSICHERND	21 05 300		
8	Washer; D4,3 X D8 X 0,5	22 02 302		
9	Support for safety thermostat; 48 X 52	62001583	2	to machine no.: 219 406
10	Safety thermostat; 98+/-4 GRAD AUS	31 25 022	2	to machine no.: 219 406
11	Thermostat bracket; 55 x 87 x 146	70200304		to machine no.: 219 406
12	Thermostat bracket; 1,0 X 83 X 200	70200355		From machine no.: 219 407
13	Hexagonal nut; M5 SELBSTSICHERND	21 05 302		
14	Thermostat clamp; 0,8 X 28 X 50	55 19 011		
15	Hexagonal nut; M14 X 1,0 X 5,0	31 25 002		
16	Gasket; D14,2 X D20 X 2,0	27 09 036		
17	Gland for thermostat; M14 X 1,0 X 15; SW19	31 25 001		
18	Thermostat; 1750 LG; 220V	31 25 013		incl. item 18.1
18.1	Gland screwing	31 25 012		